

ROYANE Z

DP2 - 4 MOORING POINT - FIFI 1
MULTIPURPOSE VESSEL



ROXANE Z

DP 2 - 4 MOORING POINT - FIFI 1 MULTIPURPOSE VESSEL



For more informations, please flash this code and visit our web site.

GENERAL

BASIC FUNCTIONS	Anchor Handling, Dredger Service, Supply, Hose Handling Towing and Survey, Assistance to dredging, Dive support, ROV support
BUILDING YEAR	2015
TYPE	EUROCARRIER 3413
CLASS	BV 1 HULL •MACH•AUT-UMS DYNAPSOS AM / AT R FIFI 1 / Unrestricted navigation
NAVIGATION	2 nd Category / 200NM
FLAG / PORT OF REGISTRY	FRANCE / Marseille
HULL N°	445
IMO N°	9751456
IMMAT.	RI 932 641 R
MMSI No.	228 056800
CALL SIGN	F I R J

DIMENSIONS

LENGTH O.A	34,00 M
BEAM O.A.	13,00 M
DRAFT MAX	3,00 M
TONNAGE	499 (UMS)
DEPTH MOULDED	4,10 / 4,70M
BOLLARD PULL	40 tonnes
FREE DECK AREA	236,6 M ²
DECK LOAD	8,5 T/M ² Average - but more with the fully protected wood deck
MAX DECK LOAD	260 tonnes

CAPACITIES

OIL FUEL	220 M ³
FRESH WATER	87 M ³
DIRTY OIL TANK	3,5 M ³
SEWAGE TANK	17 M ³

MACHINERY / PROPULSION

MAIN ENGINE	2 x Caterpillar / Type 3512C 1.140 KW @ 1800 RPM
MAIN THRUSTERS	Well Mounted Azimuth Propulsion Thrusters (Z-Drive) / Type ZF AT 6111
BOW THRUSTERS	Shallow Draught Thrusters (L-Drive) / type ZF SDT 4010
MAX SPEED	10 KTS

POWER SUPPLY

GENERATOR SETS	2 x 350 KVA Caterpillar C18 1 x 150 KVA Caterpillar C6.6
ELECTRIC SYSTEMS	24 V / 220 V / 400 V
AIR COMPRESSOR	5 000 L/H -10 BARS

DECK EQUIPMENTS

HYDRAULIC CRANE	FWD	Heila HLRM 340-2S (340 T/M) 32.85 T @ 8.70 M to 20.5 T @ 14.05 M, 5 T winch
HYDRAULIC CRANE	AFT	Heila HLRM 230-4S (200 T/M) 24.4 T @ 7.89 M to 10.3 T @ 16.50 M, 5 T winch
ANCHOR HANDLING WINCH		125 tonnes
TOWING WINCH		50 tonnes
TUGGER WINCH		x 2; 15 tonnes
MOORING WINCH (option)		x 4; 15 tonnes
ANCHOR HANDLING PINS & SHARK JAWS		H-200 SWL 200 tonnes / MAX 3" CHAIN
MOONPOOL		Diam 600 mm ready for USBL or Multibeam or Echosounder
BOAT LANDING		Removable for surfers up to 32M Designed as per Total spec

CONTROL AND NAVIGATION

RADAR	Furuno 2117
ECHO SOUNDER	Furuno FE - 700
DGPS NAVIGATOR	Furuno GP - 150D
WIND SENSOR	x 2
GYRO COMPASS	x 3 Quadrans IXBLUE
FLIR CAMERA	
SATELLITE COMPASS	Furuno SC - 50
DP II SYSTEM	Sirehna Easy DP V3

COMMUNICATION - GMDSS A3 STATION

3 PORTABLE	DSC VHF GMDSS
Fully compliant GMDSS A3 Station on board	
VSAT	Sailor 900 VSAT with Internet a VOIP phone
FLEET BROAD BAND	Sailor 250
4G	MODEM

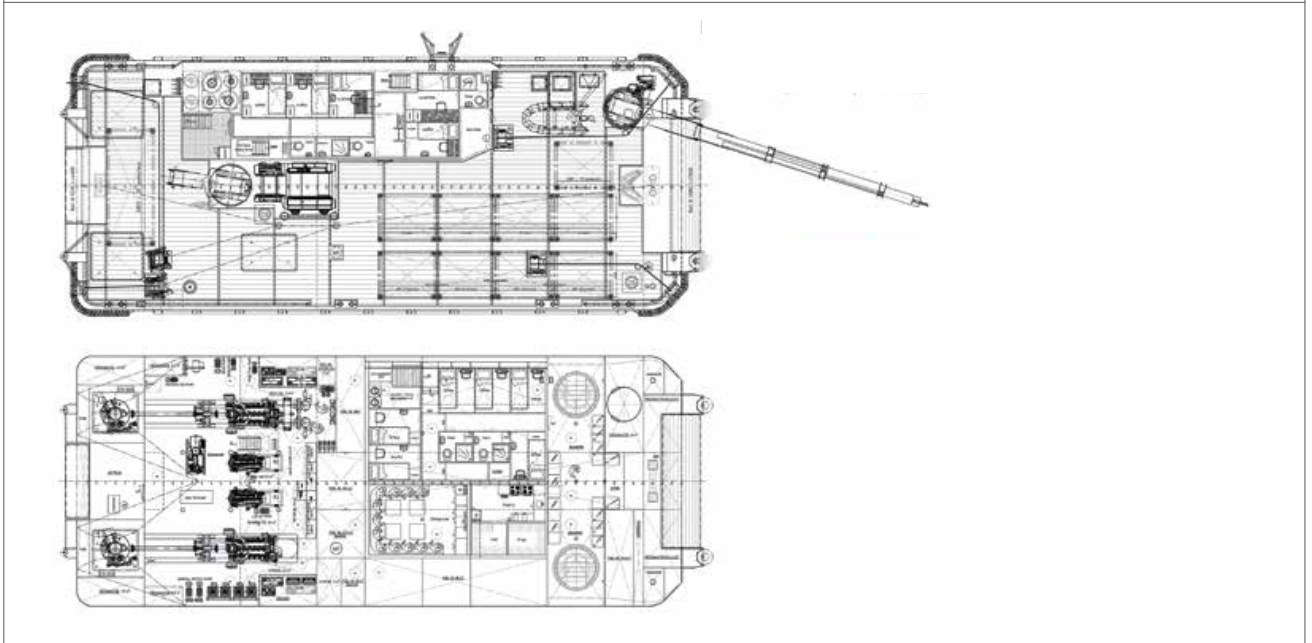
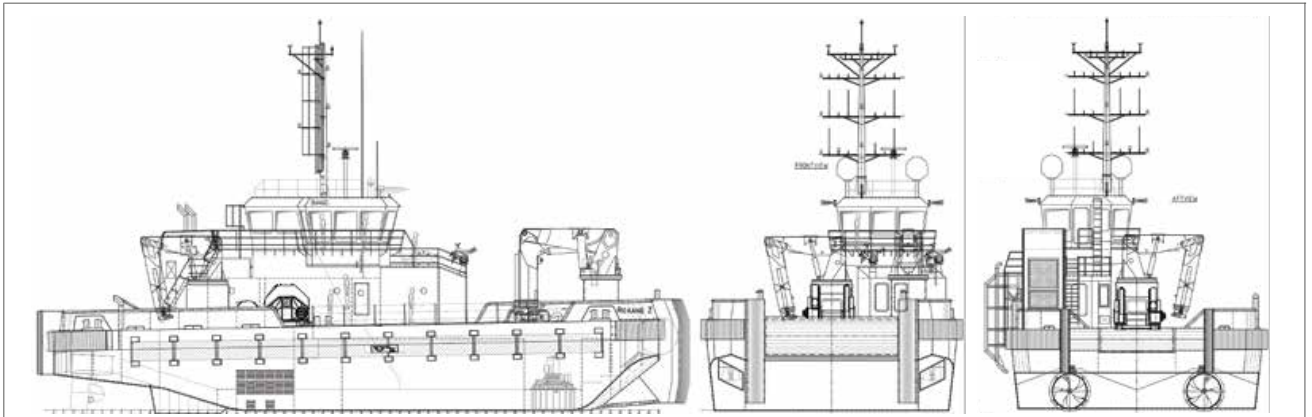
ACCOMODATION

20 PERSONS	8 Crew & 12 Passengers
CABINS	9 x Double & 2 x Single
HEAT AND AIR-CONDITIONING SYSTEM, WI-FI & TV	

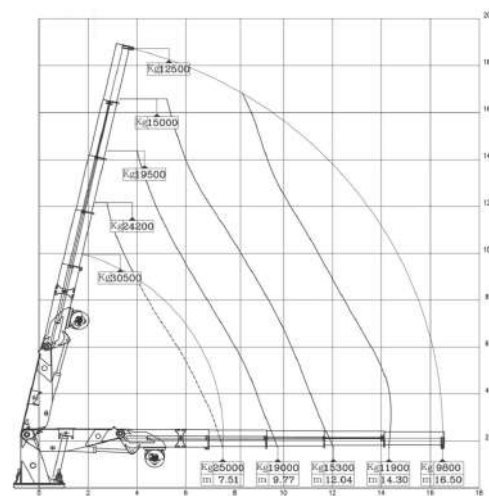


ROYANE Z

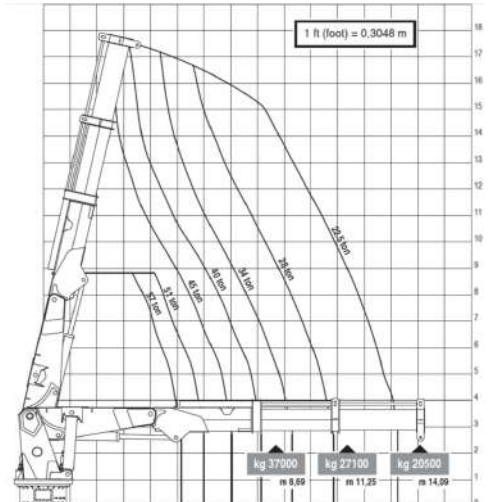
DP2 - 4 MOORING POINT - FIFI 1
MULTIPURPOSE VESSEL



HYDRAULIC CRANE AFT - Heila HLRM 230 tm



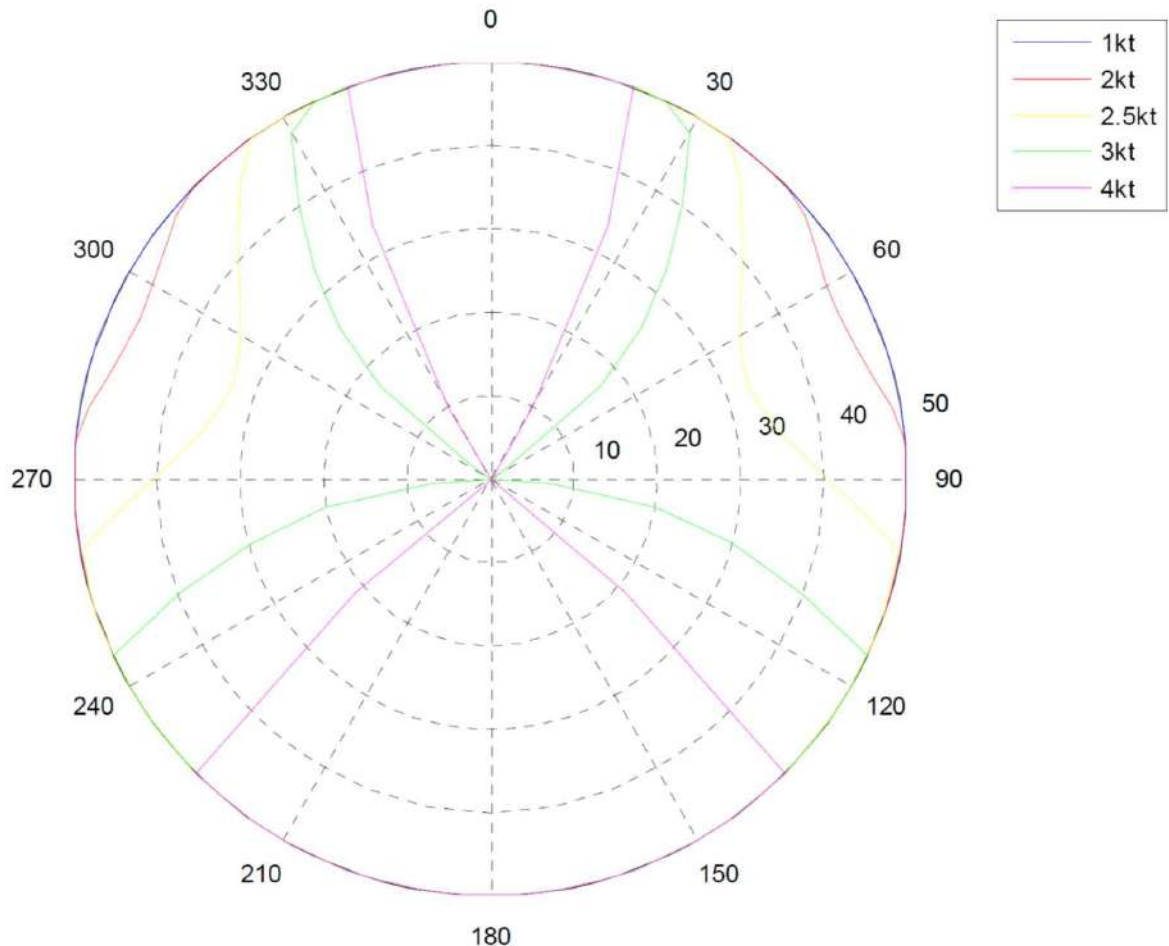
HYDRAULIC CRANE FWD - Heila HLRM 340 tm



ROXANE Z

DP2 - 4 MOORING POINT - FIFI 1
MULTIPURPOSE VESSEL

CAPABILITY PLOT IN NOMINAL CASE



The vessel is able to maintain its position with:

- A wind speed of about 45 knots and 2 knots of current
- A wind speed of about 36 knots and 2.5 knots of current

The ship cannot sustain a current greater than or equal to 3 knots when the wind and current are coming sideways. The capacities are more important if the heading is down the perturbations

GASOIL CONSUMPTIONS

DP	2 m3
TRANSIT	6 m3
DOCK	0,5 m3