

# MODULAR PONTOONS 40''

## MODULAR BARGES



### GENERAL

BUILDING YEAR 2008 - 2010  
CLASS GL  
AVAILABILITY 23

### DIMENSIONS

LENGTH 12,20 M - 40'  
WIDTH 2,45 M - 8'  
HEIGHT 1,85 M - 6'  
DRAUGHT 0,5 M  
WEIGHT 10,5 TONS

### COUPLING

**SAFE:** NO SPACE BETWEEN PONTOONS  
**WELL HOLDING:** COUPLING SYSTEM

### TRANSPORTATION

**EASY TO MOBILIZE:**  
ISO HANDLING EYES  
ISO 40' CONTAINER FOR SHIPPING WORLDWIDE  
ROAD TRANSPORTABLE

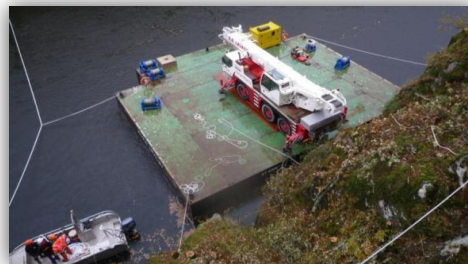
### APPLICATIONS

- TRANSPORT BARGES :



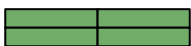
- NAVAL SUPPORT

- EXHIBITION PLATFORMS (E.G. : FIREWORKS)
- CRANE PONTOON :

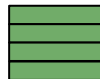


### OTHERS COUPLING CONFIGURATIONS

4-UNIT CONFIGURATION:  
BARGE : 24,40 X 4,90 M



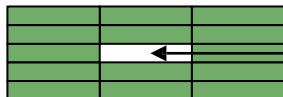
4-UNIT CONFIGURATION:  
BARGE : 12,20 X 9,80 M



6-UNIT CONFIGURATION:  
BARGE : 14,65 X 12,20 M



14-UNIT CONFIGURATION:  
BARGE : 36,60 X 12,25 M



MOON POOL

**DIVING SUPPORT**



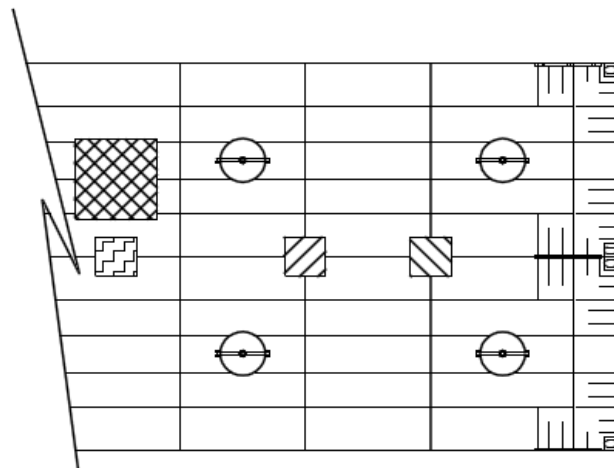
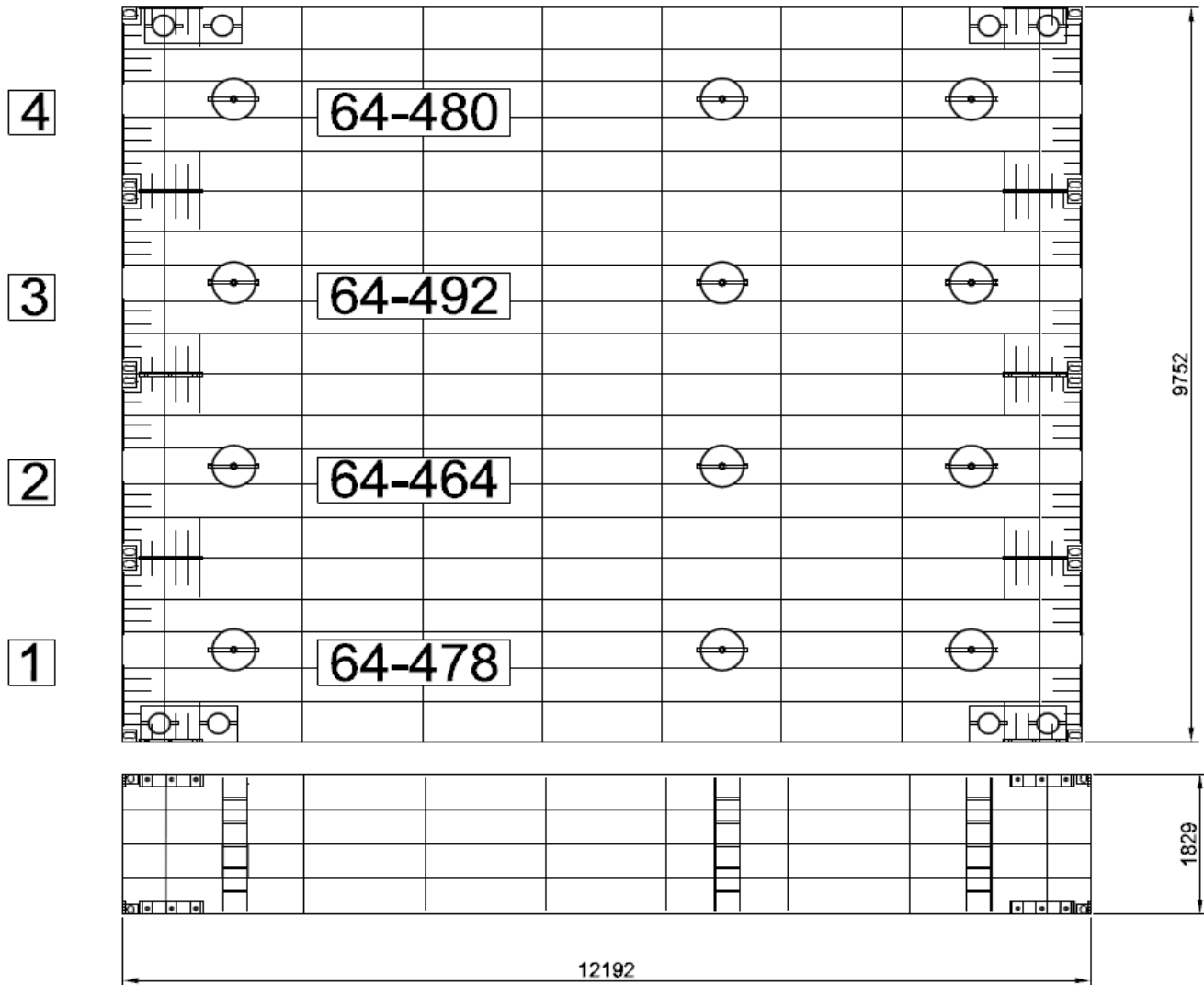
JIFMAR OFFSHORE SERVICES  
1 rue du cinéma  
13016 MARSEILLE - FRANCE  
Tél. : + 33 4 86 82 03 60  
Fax : + 33 4 12 94 08 29  
www.jifmar.com

©No part of this leaflet may be reproduced in any form without written permission from Jifmar Offshore Services. This leaflet may be updated without advance notice.



# MODULAR PONTOONS 40''

MODULAR BARGES



JIFMAR OFFSHORE SERVICES  
1 rue du cinéma  
13016 MARSEILLE - FRANCE  
Tél. : + 33 4 86 82 03 60  
Fax : + 33 4 12 94 08 29  
www.jifmar.com

©No part of this leaflet  
may be reproduced in  
any form without written  
permission from Jifmar  
Offshore Services. This  
leaflet may be updated  
without advance notice.

