

MATTEO L

SPECIAL SERVICE MULTI PURPOSE FAST CATAMARAN



For more informations, please flash this code and visit our web site.

GENERAL

BASIC FUNCTIONS	Anchor Handling, Towing and Survey
BUILDING YEAR	2000 - Rebuilt 2010
NAVIGATION	UK MCA Workboat code of practice category 3 (20 nm)
FLAG	FRENCH
PORT OF REGISTRY	MARSEILLE
CALL SIGN	FGG9024
HULL N.	ALN GB 031 J 000

DIMENSIONS

LENGTH O.A	10,30 M
BEAM O.A.	4,90 M
DRAUGHT	0,65 M (loaded) / 0,50 M (light)
TONNAGE	GRT 10 / NRT 3
DEPTH MOULDED	2,00 M
BOLLARD PULL	2 TONS

CAPACITIES

FUEL CAPACITY	1 M ³
WATER CAPACITY	0,2 M ³

MACHINERY

MAIN ENGINE	2 x No CUMMINS 6 BT 5,9 M Turbo Diesel 2 x 180 CV
BOW THRUSTER	2 x Hamilton HJ 274 Waterjets
CRUISING SPEED	17 KTS
MAX SPEED	19 KTS

DECK MACHINERY

CAPSTAN	2 TONS Capstan Hauler C5
TOWING HOOK	2 TONS
HYDRAULIC MAT	300 KGS

CONTROL AND NAVIGATION

AUTOPILOT	AP9 MK III Simrad Roberston
RADAR	Furuno M 1832 9 GHZ
GPS	Furuno GPS Navigator GP-36
SOUNDER	Furuno Sounder 3D FCV-1200 L

COMMUNICATION

VHF	VHF Sailor Compact RT 2048
VHF ASN	Furuno FM 2721 / VP 70
RECEIVER	Furuno Navtex NX-300 Uniden Bearcat UBC 9000 XLT
TRANSPONDER	RAD Jotron Tron SART 9 GHZ

EQUIPMENT INCLUDES

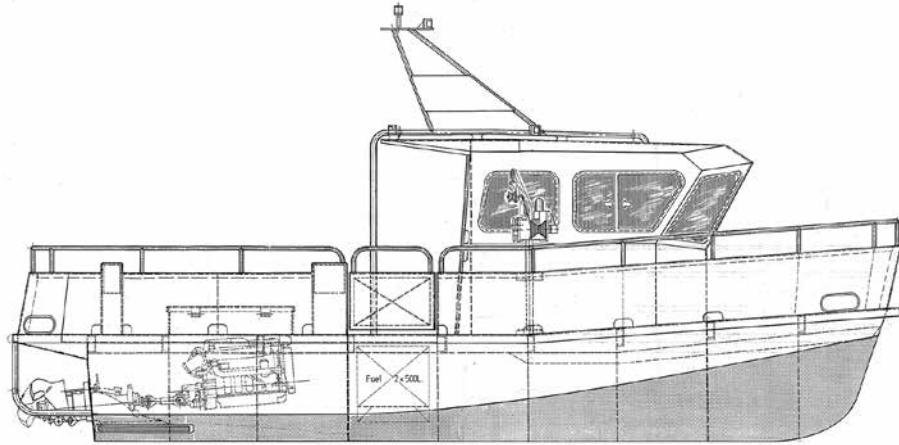
Specially developed bow fendering and boarding platform with rubber fendering. A box section bow platform with sprung fastening for shock absorbing when landing, and built out "NIB" that fits between the boat and landing piles locating the boat and providing a shorter step of distance to the turbine ladder from a bow platform with safety rails.

MATTEO L

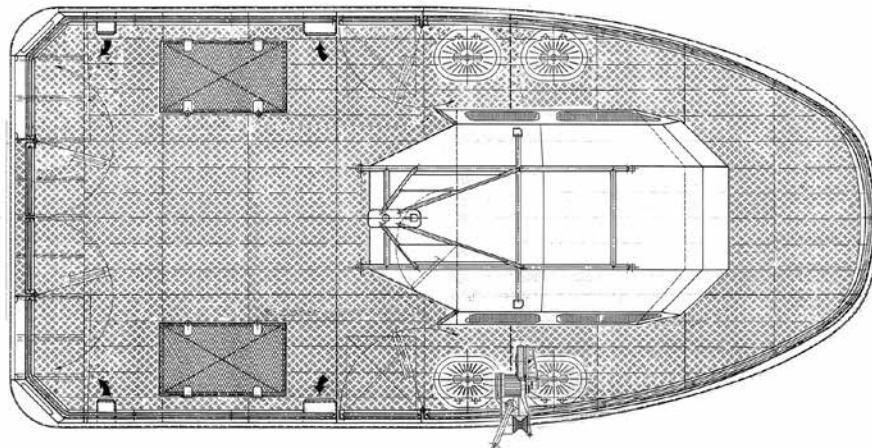
SPECIAL SERVICE

MULTI PURPOSE FAST CATAMARAN

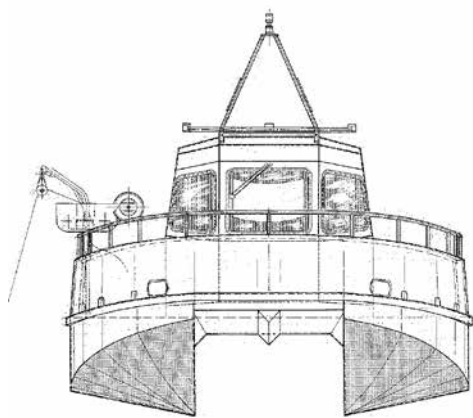
PROFILE FROM STARBOARD



PLAN VIEW



FWD VIEW



AFT VIEW

