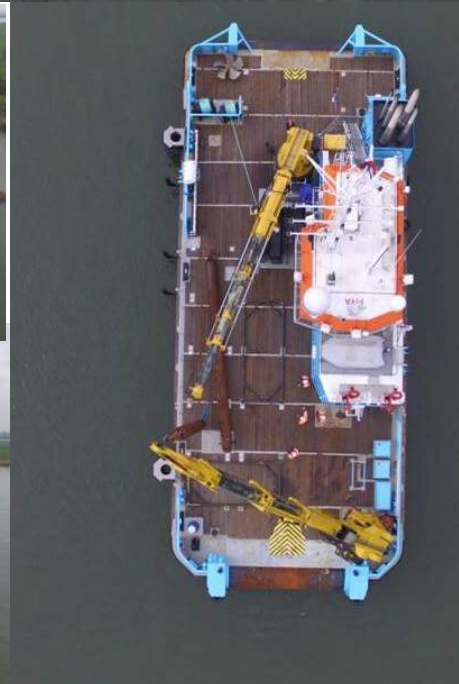


JIF CHALLENGER

MULTI PURPOSE OFFSHORE VESSEL - FIFI DP II

JIF CHALLENGER is a multipurpose utility vessel DP II able to handle all kind of missions both in deep waters and shallow waters.



JIFMAR OFFSHORE SERVICES
1 rue du cinéma
13016 MARSEILLE - FRANCE
Tél. : + 33 4 86 82 03 60
Fax : + 33 4 13 94 08 29
www.jifmar.com

*No part of this leaflet
may be reproduced in
any form without written
permission from Jifmar
Offshore Services. This
leaflet may be updated
without advance notice.



JIF CHALLENGER

MULTI PURPOSE OFFSHORE VESSEL - FIFI DP II

GENERAL

BUILDING YEAR	2015
TYPE	DP II
CLASS	BV 1 ✕ HULL • MACH (Dynapsos AM / AT) Special service / Support vessel & FIFI 1
NAVIGATION	Unlimited 1 ST Category
FLAG/PORT OF REGISTRY	FRANCE / MARSEILLE
HULL N°	454
IMO N°	9732735

DIMENSIONS

LENGTH O.A	34 M
BEAM O.A.	13 M
DRAFT MAX.	3 M
TONNAGE	499 (UMS)
DEPTH MOULDED	4,10 / 4,70 M
BOLLARD PULL	40 T approx.
FREE DECK SPACE	236,6 M ²
DECK LOAD	8,5 T/M ²
MAX. DECK LOAD	245 T

CAPACITIES

FUEL CAPACITY	220 M ³
FRESH WATER CAPACITY	87 M ³
DIRTY OIL TANK CAPACITY	3,5 M ³
SEWAGE TANK CAPACITY	17 M ³

MACHINERY / PROPULSION

MAIN ENGINE	CATERPILLAR 3512 : 2 x 1140 kW @ 1800 RPM
MAIN THRUSTERS	WELL MOUNTED AZIMUTH PROPULSION (Z-DRIVE) - TYPE ZF AT 6111
BOW THRUSTERS	SHALLOW DRAUGHT THRUSTERS (L-DRIVE) - TYPE ZF SDT 4010
CRUISING SPEED	10 KTS

POWER SUPPLY

GENERATORS SETS	CATERPILLAR C18 : 2 x 350 kVA
EMERGENCY GENERATORS	CATERPILLAR C6 : 1 x 150 kVA
AIR COMPRESSOR	5000 L/H - 10 Bars

DECK MACHINERY

CRANE FWD	HEILA HLRM 340-2S (350T/M) 32,85T@8,7M to 20,50T@14,05M 15T WINCH
CRANE AFT	HEILA HLRM 230-4S (230T/M) 25 T @7,5 M to 9,8 T@16,50 M 8T WINCH
ANCHOR HANDLING WINCH	125 T
TOWING WINCH	50 T
TUGGER WINCH	2 x 15 T
MOORING WINCH	2 x 7 T (OPTION) CAN BE USED AS 4 POINT MOORING
ANCHOR HANDLING PINS	SHARK JAW H-200 SWL 200 T / Max. 3" chain
MOONPOOL	Ø 600 MM READY FOR USBL MULTIBEAM ECHOSOUNDER
BOAT LANDING	REMOVABLE FOR SURFERS UP TO 32 M (DESIGNED AS PER TOTAL SPEC)
FIRE FIGHTING	FIFI 1 CERTIFIED 2x1200 CBM/H
GROUNDING	2 SPUDS LEGS FOR STATION KEEPING DURING GROUNDING

CONTROL AND NAVIGATION

AUTOPILOT	INTEGRATED DP SYSTEM
DP SYSTEM	SIREHNA easy DP V3
SET RADAR	FURUNO FAR-2117
GPS	FURUNO GP-150D
WIND SENSOR	x 2
GYROCOMPASS	x 3
SOUNDER	FURUNO FE-700

COMMUNICATION - GMDSS A3 STATION

VSAT	SALOR 900 VSAT
FBB	SALOR 250

ACCOMODATION

CABINS (19 PERS.)	3 x Single cabin 8 x Double cabin
-------------------	--------------------------------------



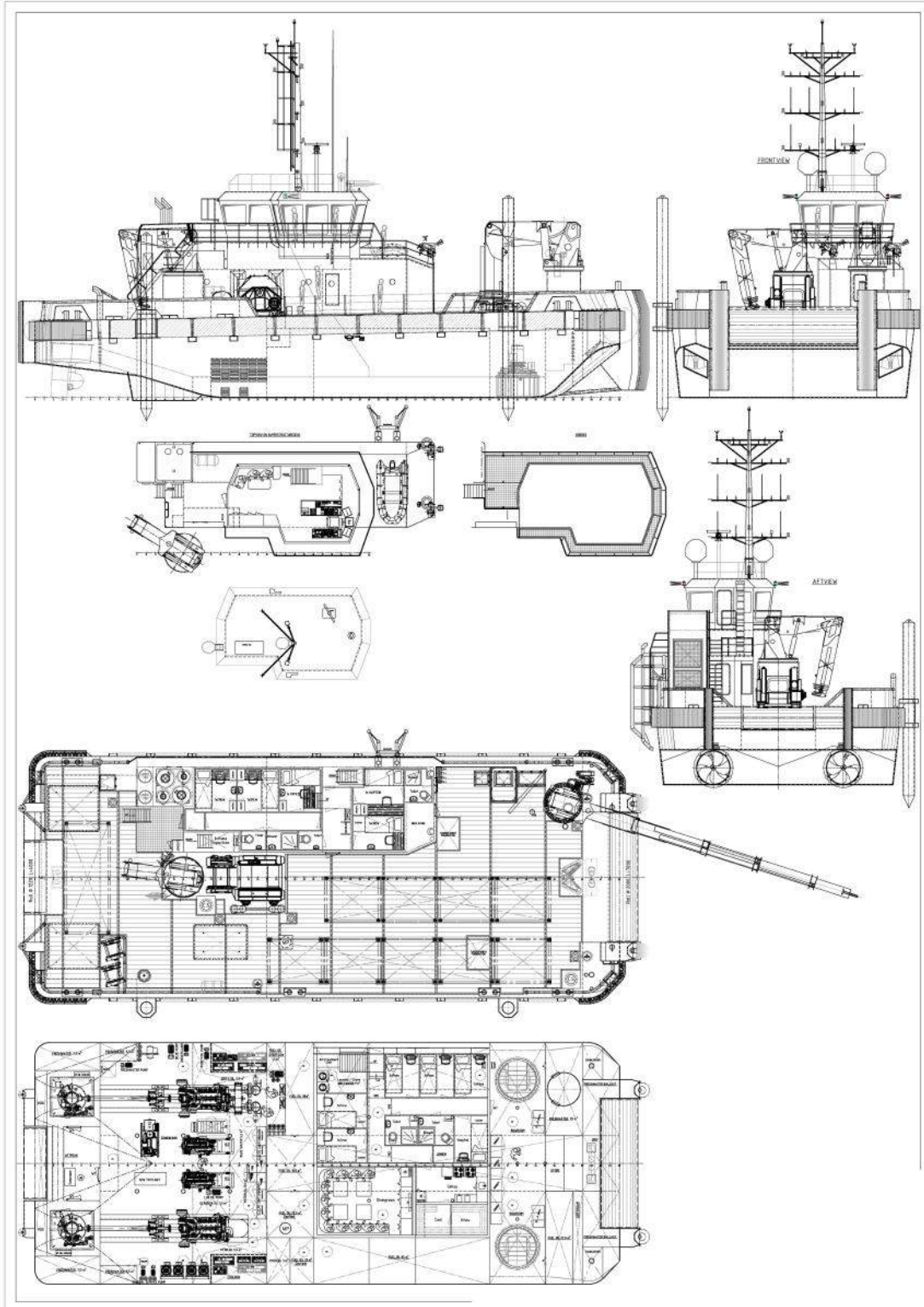
JIFMAR OFFSHORE SERVICES
1 rue du cinéma
13016 MARSEILLE - FRANCE
Tél. : + 33 4 86 82 03 60
Fax : + 33 4 13 94 08 29
www.jifmar.com

*No part of this leaflet may be reproduced in any form without written permission from Jifmar Offshore Services. This leaflet may be updated without advance notice.



JIF CHALLENGER

MULTI PURPOSE OFFSHORE VESSEL - FIFI
DP II



JIFMAR OFFSHORE SERVICES
1 rue du cinéma
13016 MARSEILLE - FRANCE
Tél. : + 33 4 86 82 03 60
Fax : + 33 4 13 94 08 29
www.jifmar.com

*No part of this leaflet
may be reproduced in
any form without written
permission from Jifmar
Offshore Services. This
leaflet may be updated
without advance notice.

